



St. Patrick's High School Keady

EXCELLENCE EVERY DAY FOR EVERY CHILD

SURVSHFWXV

5357



SCHOOL INFORMATION



St Patrick's High School
Middletown Road
Keady
Armagh BT60 3TH

Tel: +44(0)28 37531393

Fax: +44(0)28 37538

Email: info@stpatricks.keady.ni.sch.uk

Contents

About Us

Primary Partner Links
Mission Statement
Student Leadership
Spiritual Life

Pastoral Care

Pastoral Structure
Intervention and Support
House System

School Day

Uniform
Timetable

Curriculum

Key Stage 3
Key Stage 4
Sixth Form
Careers Education Information
Advice and Guidance
Learning Outside the Classroom

The Next Chapter

Leavers Destinations
The next Chapter



WELCOME TO OUR SCHOOL

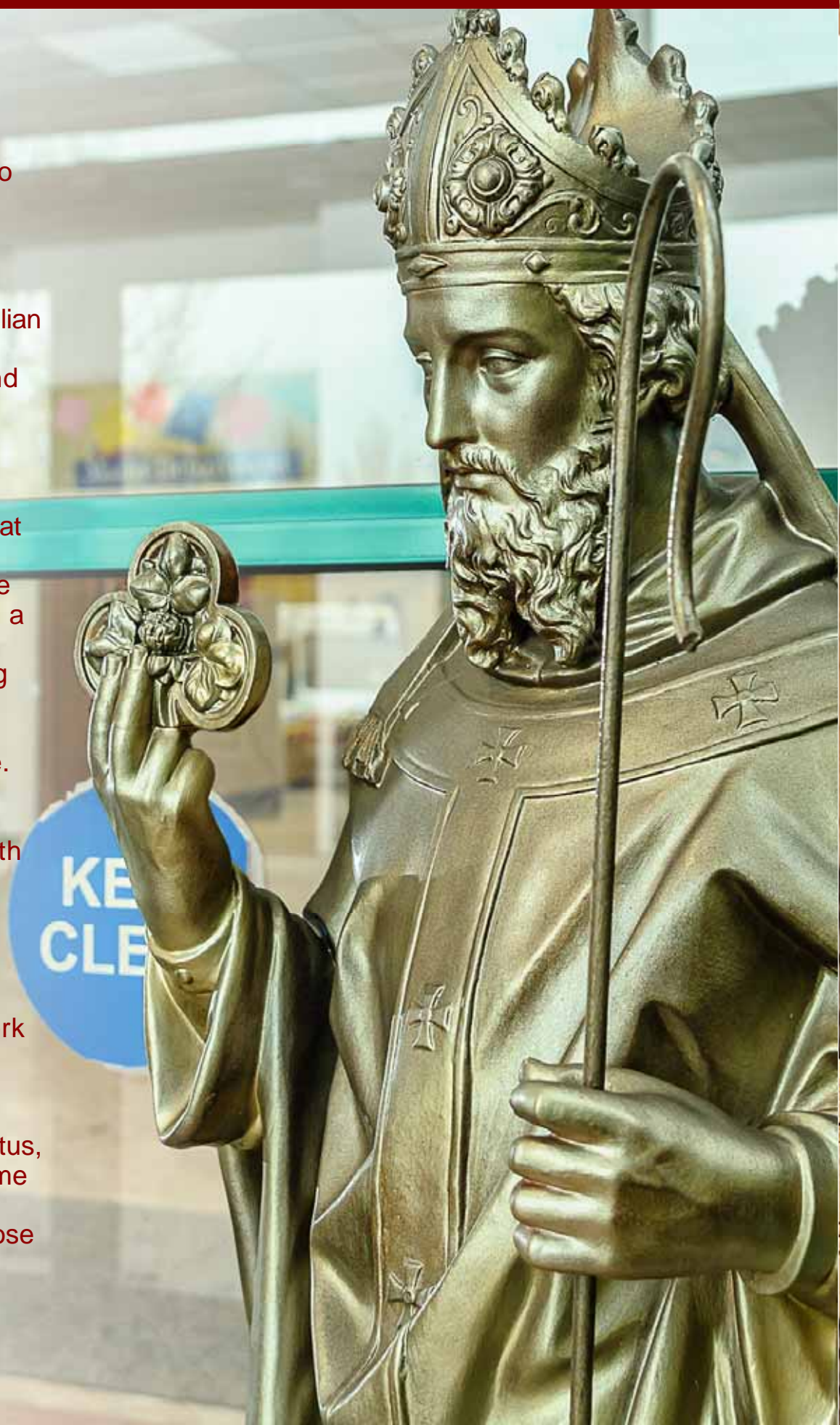
On behalf of the Governors, Staff and Pupils of St Patrick's High School, a very warm welcome to all the families who are considering St Patrick's High School for their child's post primary education.

St Patrick's High School, as a Catholic and LaSallian school, places great emphasis on our Christian values of inclusion, of mutual respect, of truth and justice. As a staff, we work to ensure pupils are encouraged, supported and challenged to fulfil their potential.

Teaching and Learning is central to everything that we do at St Patrick's. We offer a comprehensive curriculum and have a dedicated and progressive teaching staff, who are committed to developing a community of learners at our school. We also recognise the importance of providing our young people with leadership opportunities, and in St Patrick's you will find a vibrant model of student leadership that actively promotes the pupil voice.

We recognise that the transition from primary to post-primary education is a crucial period for both children and for their parents. We aim to make this journey one that is both exciting and as seamless as possible. Our transition model is unique in the extensive links that have been established over a number of years with our partner primary schools. It is our privilege to work with these schools, and for the children and young people of this community.

We hope you enjoy browsing our school prospectus, which will give you an insight and flavour into some of the many wonderful and exciting opportunities that await you, our prospective pupils, if you choose to study at St Patrick's High School.



PRIMARY PARTNERSHIP

TRANSITION

A particular strength of the school is the highly effective partnership with the local primary schools which supports pupils' transition, learning and development.

The strategic approach to drive forward the effective learning partnership with the primary schools has been a factor in improving teaching and learning.

Dear Parent/Guardian

In St. Patrick's High School we share curriculum information, data, resources, training and expertise with our nine local Partner Primary Schools. Identifying each child's strengths, talents and particular needs enables us to provide even greater support for your child's transition to St. Patrick's High School.

The Derrynoose, Kilcluney and Tynan Learning Community Transition Programme ensures that every child will experience the highest possible level of support and success as they make the transition between Primary School and St. Patrick's. The programme of support will take account of the whole child, where no child is invisible.

The Transition Programme also ensures that all parents/guardians fully participate in the transition programmes for their children. It further ensures that innovation and excellence continue to be promoted, as we all work together in an environment that supports each child's development to achieve his/her full potential and to be caring and responsible members of our society both now and in the future.

Ciaran Monaghan
Kieran McCrory
Mrs C Duffy
John White
P Harte

B. Casey
R. Gallagher
Feena Hughes
G. Farrell
J. Moore



Mission Statement:

“As a Catholic school in partnership with parents and the community, St Patrick’s seeks to provide children of all abilities with a secure, caring, stimulating and happy environment founded on values of hard work, personal integrity and quality learning and where all students are encouraged to develop their talents and character and to contribute positively to home, school, church and society.”

St Patrick’s High School is a wonderfully inclusive and all ability school. As a Catholic Lasallian school, we place great emphasis on the Christian values of inclusion, of mutual respect, of truth and justice. We were thrilled to attain Flagship Status for our Inclusion Quality Mark in 2023. The IQM assessor remarked that:

“All who walk through their doors belong to a community where pupils will always be treated with respect. St. Patrick’s provides a happy, stimulating and vibrant learning environment focussed on helping students develop as effective independent learners and positive members of their community and society.”

We show respect by treating others like

Respect
we would like to be treated

Taking pride in our faith as Catholics

Integrity
and pride in ourselves as well as our work

We achieve in our school by
Achieving

Pu

As a Catholic and a Lasallian school, we in St Patrick's are entrusted by parents to develop the academic, pastoral, social and spiritual interests of our students and to prepare our students to be integral members of a changing society. We celebrate our inclusive ethos and believe that learning is best achieved where students experience a sense of enjoyment and fulfilment in their work. In St Patrick's High School, each student is supported in the development of a personal ethos of self-improvement in a safe, secure and supportive environment. We work together to engender in our students positive attitudes and behaviours based on respect for self and others. We acknowledge the importance of our pastoral role in the welfare of all our young people and through our Mission Statement and ethos, every student is encouraged to be the best that they can be. As a community, we are committed to nurturing an understanding of our values and to equipping our students with the knowledge and skills to make informed decisions in light of these values.

Achieving
the
best we can be
striving to be the

Being a mixed
ability school

Equality

we are equal
regardless of our
abilities

Positive
Attitude

Having a positive
mental attitude

to everyday
school life

The Junior Leadership Team have compiled the following statement about the ethos of our school and how this is translated into everyday practice:

"We, the pupils are always at the centre of every decision in school life. This is why we are at the centre of our Lasallian star. We then took the five principles of the Lasallian school and came up with a statement on how we live them in everyday school life. This means that we are a community that includes and welcomes all. We look out for our poor, as we know that to be poor can be in many forms, such as educational, financial and neglect. We, as a team, work together to help these people specifically in our school community".

STUDENT LEADERSHIP

A WARM WELCOME FROM OUR HEAD PUPILS

A warm welcome to our future Year 8 pupils. We are the Senior and Junior Head Boys and Head Girls in St. Patrick's High School. It is our job to work with all our student leaders to ensure that everyone in our school feels happy, comfortable and secure. We are very proud of our school. We want to make sure that you enjoy your time in St. Patrick's High School and feel like you are a part of an inclusive school community where you can fulfil your potential. We are always here if you need a quiet word.

We run our own teams in the school and complete action plans to target areas we identify. Some of the groups we have formed this year and roles undertaken include :

- ✓ Ethos Group
- ✓ Eco Schools Group
- ✓ Careers Development Group
- ✓ Lead Learners
- ✓ Mentoring
- ✓ Primary Partnership Representatives
- ✓ Student Governor
- ✓ Keady Recreational Centre (KRC) Student Representative

We look forward to seeing you in our school.



A Vibrant Leadership Model

The students are the central focus of our school and we firmly believe in involving our students in the decision-making process. Recognising that we need leaders at all levels, pupil participation in the leadership of the school is crucial for our success. We have a Senior and a Junior Leadership Team who work closely together to ensure that the Student Voice is listened to and heard.

SPIRITUAL LIFE



As a Catholic school we centre our mission on the person of Jesus Christ present and alive throughout our school community and in all aspects of school life. As such we ensure that our school is a loving caring environment marked by strong Gospel values and example, emphasising the Catholic tradition in all we do.

Rooted in the Catholic tradition, St. Patrick's High School encourages each pupil to develop and nurture their own spiritual identity while respecting those of others. We support our pupils to find different ways that will enable them to share God's love with others. We are proud to be a community of faith and learning. It is our belief that each person is created in the image and likeness of God and is called to live that relationship with Him daily in the way that we speak to and treat those around us.

We celebrate and embrace the uniqueness of everyone as we work together to deepen our relationship with God.

Each day begins with prayer; each pupil in Year 8 receives our school prayer card which they will use throughout their time in St. Patrick's. It is our hope that these special prayers will always continue to spiritually nourish them as they move on in life from us.

Our Catholic faith is also taught to each pupil in R.E. class alongside events in the liturgical calendar which support our school-based faith commitment throughout the year and we are fortunate to have a beautiful school oratory providing space for quiet, private, personal prayer.

Pupils of St. Patrick's are given opportunities to live out their social responsibility, to care for others through our Annual Trocaire Campaign, work with St. Vincent de Paul, Action Mental Health, those supporting the homeless and other local charities.

EXCELLENCE IN PASTORAL CARE



PASTORAL CARE

Pastoral Care in St Patrick's High School has at its centre the recognition of the uniqueness of each and every child in its care. We aim to create a safe and caring environment where each student is valued, challenged and supported to achieve their full potential. The welfare of the individual student is paramount and we promote the full academic and personal development of our students within a child-centred Christian environment. As a Catholic school, we aim to live by our Gospel values of Respect, Love, Solidarity, Truth and Justice. To translate this vision into everyday practice, each class completes their own Values Charter, and reflect daily on their performance.

We expect the highest standards of behaviour from all of our students. Individual and class performance, attendance and behaviour targets are set and reviewed by pupils with their Form Teacher. Our reward system is linked to achievement of targets set.

We have a strong Pastoral Care system providing a network of support for all individuals. Each student within the community of St Patrick's High School is in the care of a Form Teacher who is guided by their Year Head. A Senior Leader is assigned to each year group and links closely with the Year Head to ensure quality of provision, intervention and support. The promotion of good relationships at all levels is fundamental. Consequently, we work in partnership with the school community and parents in the holistic education of our pupils and we pride ourselves in the positive relationships that we have forged.

The school have a dedicated FamilyWorks school counsellor, who is available to pupils, two days each week. Counselling is accessed through any member of staff in conjunction with the Vice-Principal or by self-referral and information on how to access this support is shared with pupils throughout the year.

As a child-centred school, staff strive to meet the needs of pupils in a professional, caring manner.

EXCELLENCE IN PASTORAL CARE

Alongside a supportive PSE programme of study, Form Time across the whole school provides excellent opportunities for group discussion, where pupils can talk about a wide range of topics, issues and current affairs not connected to academic work. There are also plenty of opportunities during the school day when pupils can arrange to have a chat with a member of staff who they feel comfortable with.

A robust pastoral programme ensures that every pupil is known as an individual and given every opportunity to thrive. Important elements of this include:

- ♦ Regular pastoral meetings to discuss pupil needs
- ♦ A PSE curriculum which has been designed to promote positive relationships and to develop kindness, tolerance and respect for others.
- ♦ Transition Meetings at key points on the educational journey
- ♦ Peer Mentoring and Reading Partnership
- ♦ Regular target-setting and review of targets
- ♦ Regular pupil progress meetings/Raising Standards Meetings
- ♦ A robust programme of Careers Education, Information and Guidance

Form Teacher

Each student is placed under the care and supervision of a Form Teacher who sees the student at the start of each day for Pastoral Registration.

Senior Teacher

A Senior Teacher is assigned to each of our Year Groups and meets regularly with the Head of Year to monitor both academic and pastoral progress.

Excellence every day for everyone

EXCELLENCE IN PASTORAL CARE



House System

All pupils in St. Patrick's belong to one of five 'Houses' named after Irish Saints.



Head of Year

The school operates a Head of Year and Form Tutor system for each Year Group and class, facilitating a strong individual support network for pupils.

Vice Principals

The Vice Principals will lead responsibility for Pastoral Care at each Key Stage and for ensuring that the needs of all pupils are met and opportunities for development optimised

Pupils are awarded credit marks for good behaviour, effort and attendance.

There are artistic and sporting competitions organised during the year where pupils can win points for their House.

The pupils in the House that gain the most points during the year are treated to a special trip at the end of the year.

EXCELLENCE IN LEARNING SUPPORT





The Haven

Our Learning Support Centre, The Haven, is dedicated to serving students from Years 8 through to 12. In The Haven we firmly believe that every single student has unique talents and deserves to learn in an inclusive and nurturing learning environment.

Our message is simple, yet powerful: ***to provide a safe haven where students with special needs can embrace their full potential and thrive holistically – socially, emotionally spiritually and academically.*** We strive to create a warm and inviting atmosphere where each student feels not only accepted, but also celebrated for their individual abilities.

Inclusivity lies at the heart of everything we do. Our dedicated team of highly trained professionals works tirelessly to ensure that every student is supported, encouraged and included in all aspects of life at St. Patrick's High School. We understand that every child is different and we therefore tailor our approach to meet their specific needs.

The Haven comprises of two classes, one in Key Stage Three and one in Key Stage Four.

Key Stage 3: Induction and transition into the Key Stage 3 curriculum and foundations for transition into Key Stage 4.
Key Stage 4: Transition into Key Stage 4, preparation for adult life and leaving to further training or education.

Data is used to inform learning and teaching within The Haven. Personalised Learning Plans reflect the needs of each student and transition plans are drawn up in Years 10 and 12 in order to direct the student to the next stage of learning.

In Key Stage 4 a bespoke timetable is created for each student in order to equip them with the qualifications and skills necessary to transition to further education or training programmes. Many students can integrate into mainstream GCSE subjects depending on their ability. There are opportunities to study academic and vocational subjects. Work experience opportunities are also provided in Key Stage 4 for those who wish to explore this option as part of their timetable.

In The Haven we value the importance of collaboration and teamwork. We work closely with parents, guardians teachers and external providers, fostering strong partnerships to optimise each student's learning journey. Together we strive to create a seamless support system that enhances the overall educational experience of all our children and promotes long-term success.

Beyond academics, we recognise the importance of social and emotional well-being. Our dedicated staff offers a range of pastoral support services including counselling, mentoring and social skills to help our students build resilience, self-confidence and positive relationships. We believe that a happy learner is a successful learner and we are committed to creating an environment in which every student feels valued and inspired to reach their full potential.

SCHOOL DAY

UNIFORM

GIRLS

Years 8 - 12 inclusive



- ▶ Inverted 4-pleat grey, knee length skirt (compulsory for ALL students)
- ▶ Pale blue blouse.
- ▶ School Clip-on tie.
- ▶ Maroon Sweater (winter months).
- ▶ Maroon tights (all year round).
- ▶ School blazer.
- ▶ Maroon (only) jacket/overcoat (optional).
- ▶ Black shoes. (no trainers/canvas)

BOYS

Years 8 - 12 inclusive



- ▶ Black trousers.
- ▶ Pale blue shirt.
- ▶ School Clip-on tie.
- ▶ Maroon sweater (winter months).
- ▶ Grey/black socks.
- ▶ School blazer.
- ▶ Black shoes. (no trainers/canvas)

Sixth Form students wear a stripe shirt and tie.
Please ensure your child carries a school-bag and pencil case with necessary pens, pencils, calculator etc.
Please donate any used uniform into the School Office.

CATERING

Cashless Dining Hall

At St Patrick's High School we use a 'cashless' dining hall system. Every day we have deliciously healthy food options available.

Parents/Guardians can transfer money to their child's dinner account via the School Gateway App as required.

The App provides details of purchases and account balances.



A TYPICAL SCHOOL DAY

	mon	tue	wed	thurs	fri
01	06 Fo A28	32 Ir B19	38 Sc A11	19 TD A6	22 PE
02	16 Gg A23	15 Gg A25	38 Sc A11	19 TD A6	22 PE
03	43 Ma A35	56 Fr B18	43 Ma A35	56 Fr B18	06 RE A28
04	34 En B12	59 Sp B15	43 Ma A35	02 Hi A27	43 Ma A35
05	34 En B12	06 RE A28	15 Gg A25	59 Sp B15	34 En B12
06	LUNCH	LUNCH	LUNCH	LUNCH	LUNCH
07	32 LI B19	43 Ma A35	06 RE A28	43 Ma A35	04 Ar B6
08	32 LI B19	38 Sc A11	34 En B12	43 Ma A35	02 Hi A27
09	38 Sc A11	34 En B12	32 Ir B19	34 En B12	13 Mu A31
10	38 Sc A11	34 En B12	02 Hi A27	04 Ar B6	13 Mu A31

Fo - Form Period | Gg - Geography | Ma - Mathematics | Lu - Lunch | LI - Learning for Life & Work
 | Sc - Science | Ir - Irish | Sp - Spanish | RE - Religion | Hi - History | TD - Technology & Design |
 Ar - Art | PE - Physical Education | Mu - Music

SUBJECT

Understanding your timetable

TD**19****A6**ROOM
NUMBERTEACHER
NUMBER

EXCELLENCE IN THE CURRICULUM





CURRICULUM STRUCTURE

Key Stage 3

The subjects studied at Key Stage 3 are chosen to challenge and to develop a love of learning.

Key Stage 4

At Key Stage 4 a wide range of academic and vocational subjects will be offered in order to meet the needs and range of ability of all our students. Our Careers Department works closely with students and their families to ensure effective and appropriate pathways are in place.

Key Stage 3 Subjects Offered

Art & Design
Citizenship
Design & Technology
Employability
English
French
Geography
History
Home Economics
ICT
Irish
Mathematics
Music
Personal Development
Physical Education
Religious Education
Science

Key Stage 4 Subjects Offered

Art & Design
Business Studies
Business & Communication Systems
Child Development
Construction
Design & Technology
Economics
Engineering
English Language
English Literature
French
Geography
Health & Social Care
History
Home Economics
Learning for Life & Work
Mathematics
Mathematics – Further
Moving Image Arts
Music
Physical Education
Religious Studies
Science (Single Award)
Science (Double Award)
Science (Applied)
Statistics
Level 2 Occupational Studies - Business & Services
Level 2 Occupational Studies – Construction
Level 2 Occupational Studies – Engineering
Level 2 Occupational Studies – Technology & Innovation
Level 2 Personal Success & Well-Being
OCN Level 2 Extended Certificate in Applied Science
OCN Level 2 Certificate in Information Technology Applications
Prince's Trust Level 2 Certificate in Personal Development
Essential Skills in Application of Number
Essential Skills in Communication

Key Stage 5 Subjects Offered

The school collaborates closely with Schools in the Armagh Area Learning Community to offer pupils a wide range of Applied and General subjects at Post 16 Level.

The following subjects are offered to current Post 16 pupils:

Non collaboration subjects

- GCE Art and Design
- GCE Biology
- GCE Chemistry
- GCE Construction
- GCE Food and Nutrition
- GCE Economics
- GCE Health and Social Care
- GCE History
- GCE Geography
- GCE Mathematics
- GCE Physics
- GCE Political Studies
- GCE Religious Studies
- GCE Sociology
- GCE Technology & Design
- Applied Business Studies
- BTEC ICT
- BTEC Creative Media
- BTEC Sport (Single & Double Award)
- BTEC Travel & Tourism
- Moving Image Arts

Collaboration Subjects

- Spanish
- French
- Irish
- GCE Performing Arts

Post 16 Curriculum

At Post 16 students may choose three or four A Levels and/or Level 3 courses from the following suite of subjects.

Subject choice will vary year on year, depending on the needs of students.

St Patrick's High School collaborates closely with the Armagh Learning Community to increase offer of subjects at both Key Stage 4 and Post 16.

EXCELLENCE IN CAREERS ADVICE

At St. Patrick's High School, we invest significant time in supporting our pupils in all aspects of Careers Education, Information, Advice and Guidance (CEIAG).

Pupils have the opportunity to develop knowledge and understanding of the labour market of the future. We provide a diverse range of trips and visits, presentations, courses and work-related learning, where pupils can explore the range of exciting possibilities ahead of them. Through engaging in Personal Career Planning, they are able to identify and subsequently develop the skills, qualities and expertise, both inside and outside of the classroom, to meet the demands of tomorrow's workplace. St. Patrick's works in partnership with the Careers Service at periods of transition.

Careers Education is embedded throughout the school curriculum, with up to date information available to all pupils in the main school library and Careers Department. The school actively promotes links with local industry, Third Level and Further Education establishments.



“ There is a clear strategic vision, commitment and effective management of the careers programme within St Patricks. ”

Investors in Careers 2022





EXTRA-CURRICULAR ACTIVITIES



In St. Patrick's High School, we recognise and celebrate the many talents of our pupils. We believe that participation in extra-curricular activities enhances the student's self-esteem and enables them to forge strong friendships outside the classroom. We also recognise the important role such activities play in developing strong relationships between pupils and teachers. We therefore offer a rich and varied range of extra-curricular activities. Here is a flavour of just a few of them.

LEARNING OUTSIDE THE CLASSROOM



LEAVERS' DESTINATIONS



THE UNIVERSITY
of EDINBURGH

LIVERPOOL
UNIVERSITY OF



QUEEN'S
UNIVERSITY
BELFAST

ACCEPTED

University
of Glasgow



Ulster
University

ACCEPTED



insitituid teicneolaíochta dhúin deagán
DUNDALK
INSTITUTE of TECHNOLOGY

CONTINUED EXCELLENCE



MAEVE LENNON

My name is Maeve Lennon and I left St Patrick's in June 2023.

For A level I studied Chemistry, Biology and Geography as well as, History at AS level.

I am now studying Pharmacy at Queens University, Belfast.

I enjoyed my time at St Patrick's and would like to thank my teachers for all the help and support they gave me.



KATIE O'HARA

My name is Katie O'Hara and I left St Patrick's High School, Keady in June 2023.

I studied A level Chemistry, Mathematics and Geography which I thoroughly enjoyed.

I am currently studying Chemistry at university.

When I finish my Degree I hope to work in a Research Laboratory.

CATHAIR O'CALLAGHAN

My name is Cathair O'Callaghan and I left St Patricks in June 2023.

During my time there I was Junior Head Boy in Year 10 and was Deputy Head Boy in Year 14.

For my A Levels I studied Maths, Economics and Business Studies, achieving an overall A* A A.

I am currently studying a Degree in Finance at Queens University Belfast.

I hope to work within Private Equity and Investing.



esc



F1



F2



F3



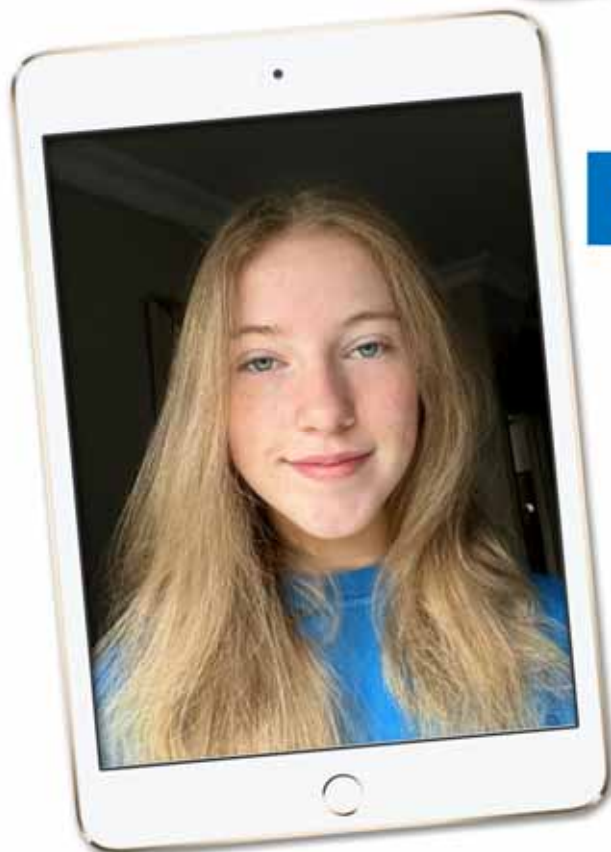
F4

F5

F6



F7



NIAMH CARVILL

My name is Niamh Carvill and I was Head Girl of St Patricks from September 2021 until June 2022.

I studied A Level Chemistry, Maths and Economics which enabled me to begin a Degree in BSc Personalised Medicine in the University of Ulster, Magee.



PATRICK NUGENT

My name is Patrick Nugent and I was Head Boy of St Patrick's from September 2021 until June 2022.

I studied A Level Drama and BTEC PE.

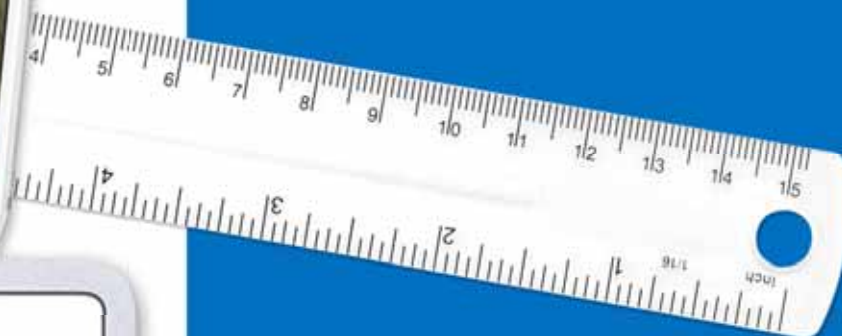
I am now completing an Apprenticeship with M Nugent Plumbing.

LAUREN MURTAGH

My name is Lauren Murtagh and I left St Patricks in June 2022.

I studied A Levels in Chemistry, Economics and Health and Social Care.

I am now completing an Accountancy Apprenticeship with FPM in Belfast.



“

St Patrick's is superbly caring, inclusive environment ensures each pupil receives the best education possible, delivered by highly dedicated staff. Participation, empowerment and a sense of connection are central to a truly inclusive school community, whereby all stakeholders work collectively to ensure success, progression and inclusion for all

”

Inclusion Quality Mark 2021



Middletown Road, Keady, Co. Armagh, BT60 3TH
Tel: +44(0)28 3753 1393 | Fax: +44(0)28 3753 8683 | Email: info@stpatricks.keady.ni.sch.uk

www.stpatrickskeady.co.uk

